

## How to set modules' channel, interface, and data format

### ----- Demo software instruction-----

Before using our products, please make simple configuration to set the channel, interface mode and data format based on your own needs.

By our software you can read or change the module's parameter such as interface baud rate, channels and data format on your PC.

Please find the following instructions. Any question, welcome to contact us freely.

#### 1. Channel configuration:

##### 433MHz default

Channel No.	Frequency	Channel No.	Frequency
1	429.0325MHZ	5	433.0325MHZ
2	430.0325MHZ	6	434.0325MHZ
3	431.0325MHZ	7	435.0325MHZ
4	432.0325MHZ	8	436.0325MHZ

##### 450MHz default

Channel No.	Frequency	Channel No.	Frequency
1	450.0325MHZ	5	454.0325MHZ
2	451.0325MHZ	6	455.0325MHZ
3	452.0325MHZ	7	456.0325MHZ
4	453.0325MHZ	8	457.0325MHZ

**Note: frequency points for each channel is pre-written. You can only change to different channel. The above is our default frequency point for each channel**


#### 2. The procedure to set module's parameter.

##### 2.1 Connect PC and the module by our program cable.

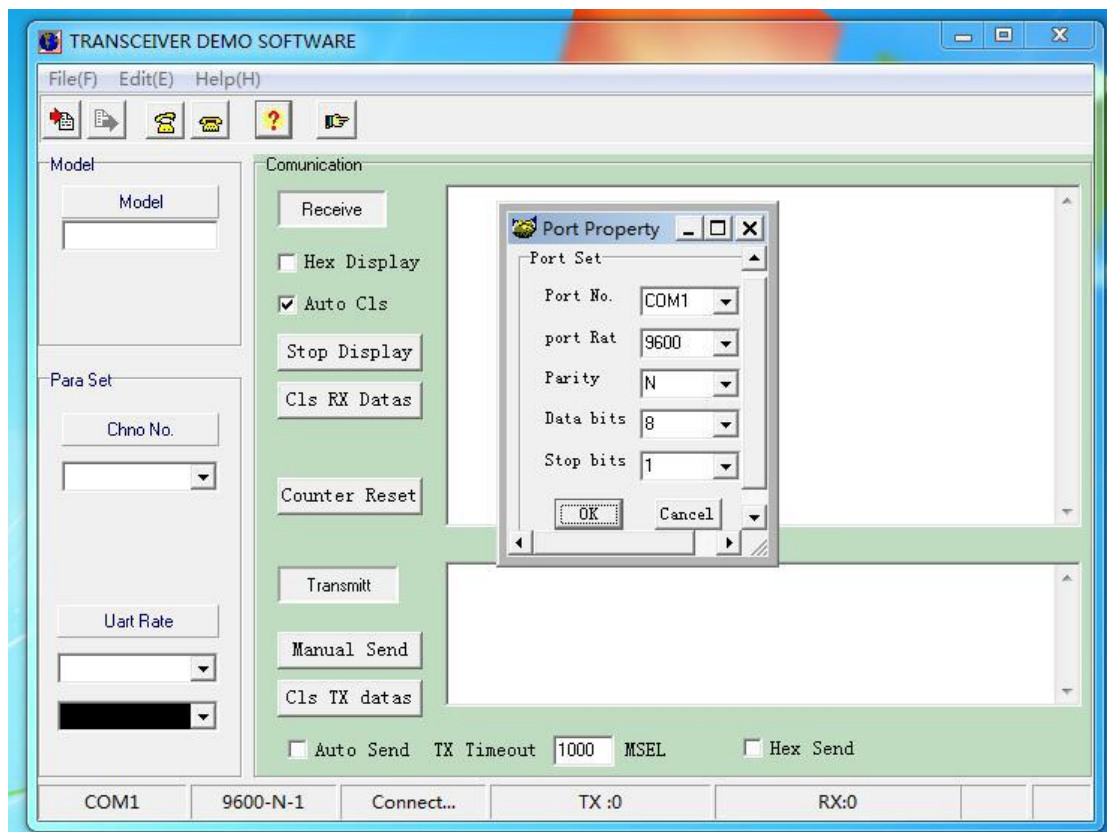
(For example RS232 module, connect RS232 to PC's RS232 port. USB is for power supply, 2W radio needs at least 2W, 1.5A, so PC's USB current is not enough, you can use a phone charge adapter)


##### 2.2 Click "Lensen" PC software, select "English":



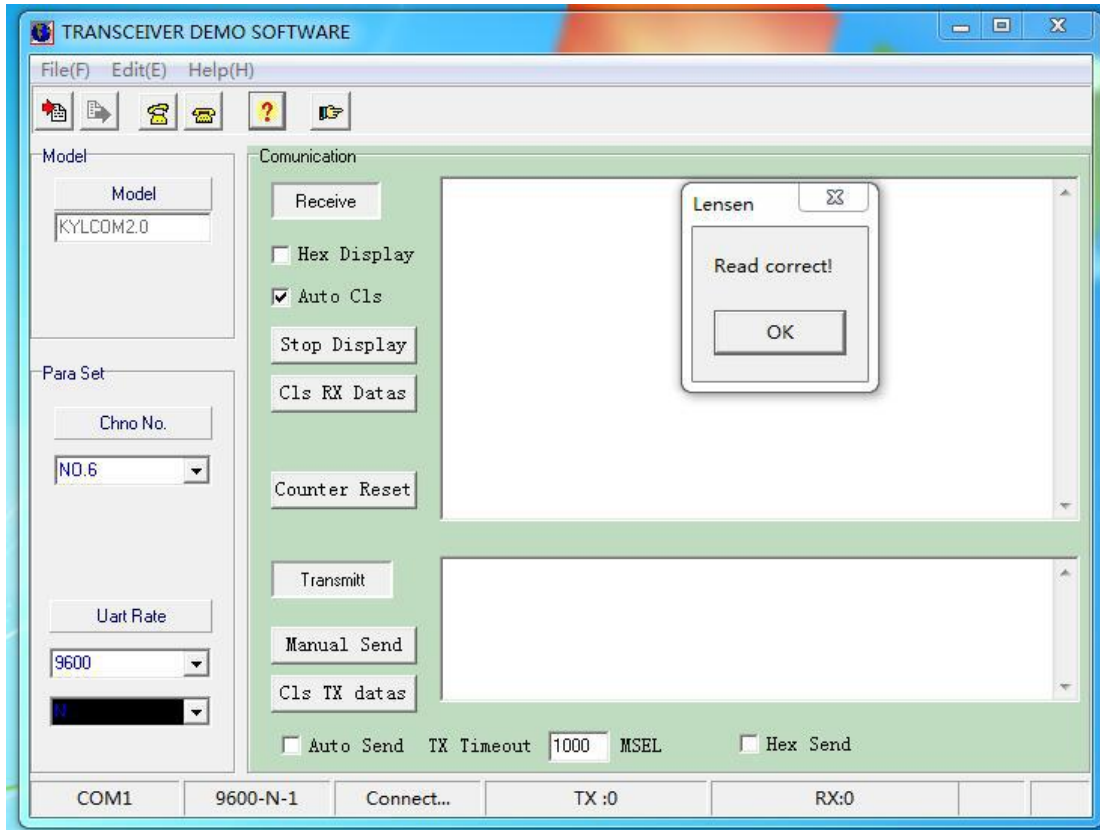
2.3 Click “open port”  , a small window as follows will appear. Then you can choose parameters in the columns.

**Note:** remember to check your PC’s Com. No., then choose proper one.



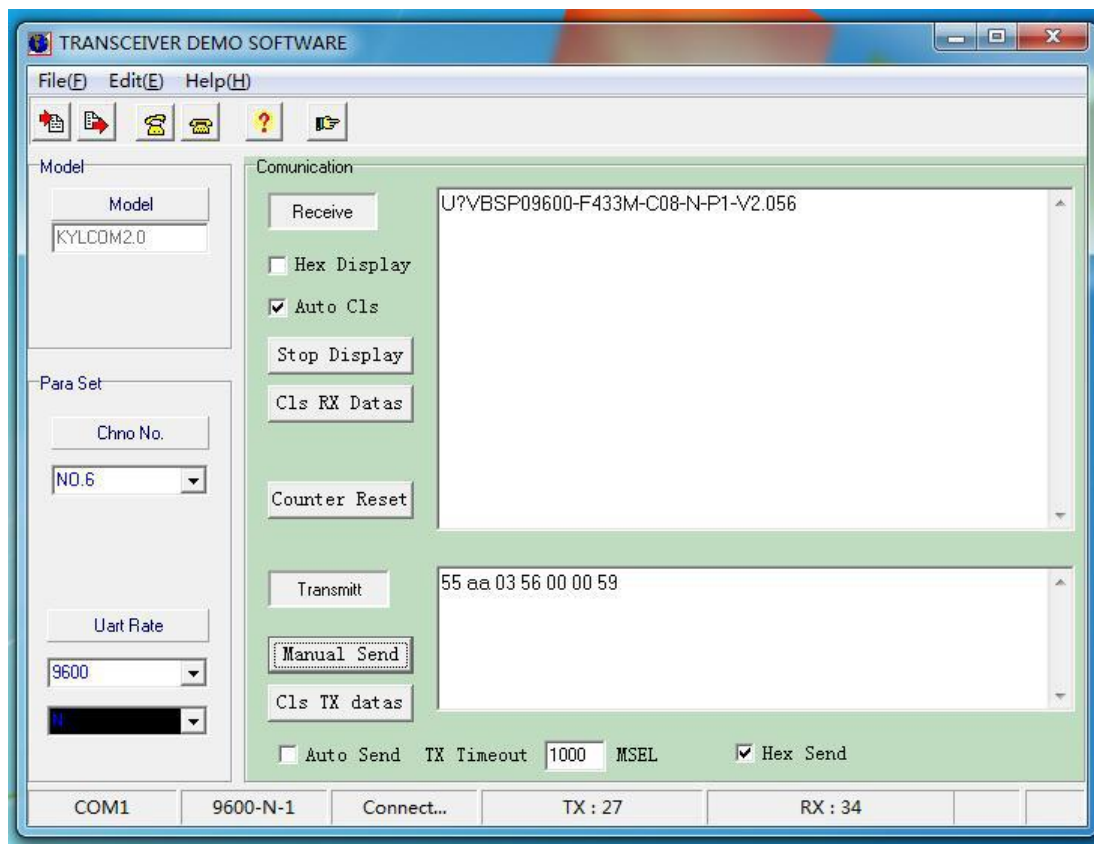
2.4 Click “read paras” 

“Read correct” shows your connection between data module and PC is correct.



The parameter shows your modules current channel, interface rate and data format.

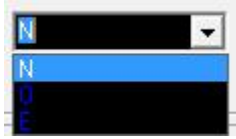
2.5 You could also send command 55 AA 03 56 00 00 59 (use HEX) to read our module's parameter and version No.



This shows the module I tested is 9600bps, 433MHz, 8 channels totally, no parity, version No. V2.056.

2.6 If you want to change some technical parameters, you can do as follows.

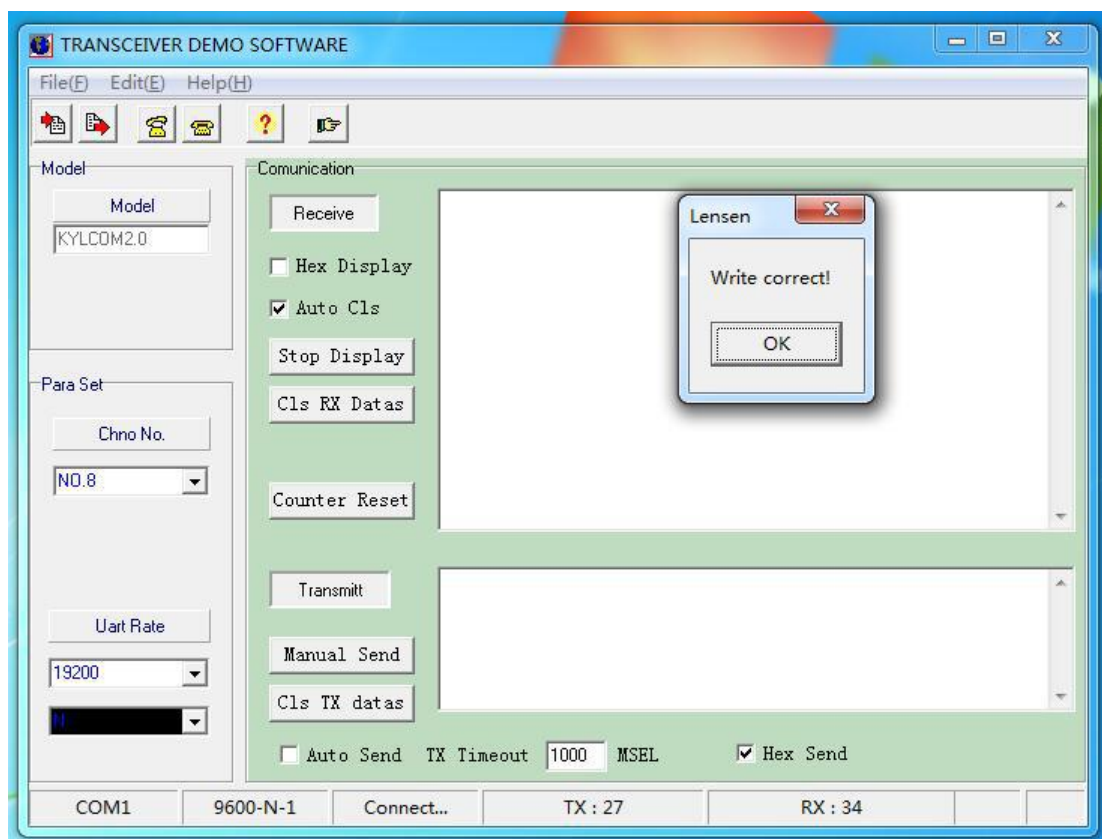
Change parameters like channel(chno No.), interface baud rate(uart rate) or parity



mode through the button on the left column.



Then click “write para” then “write correct” shows. So you finished the process of changing technical parameters.



**Note:** The RF module’s speed rate (Air Rate) can not be set by the user. It is fixed before delivery. So please specify your required speed rate when you place the order.

2.7 to check communication, one side enter some words in TX data area, on the other side, RX data area can receive what you transmitted.

Thanks again for choosing our products  
Have a good day